

State of Wyoming Corner Record

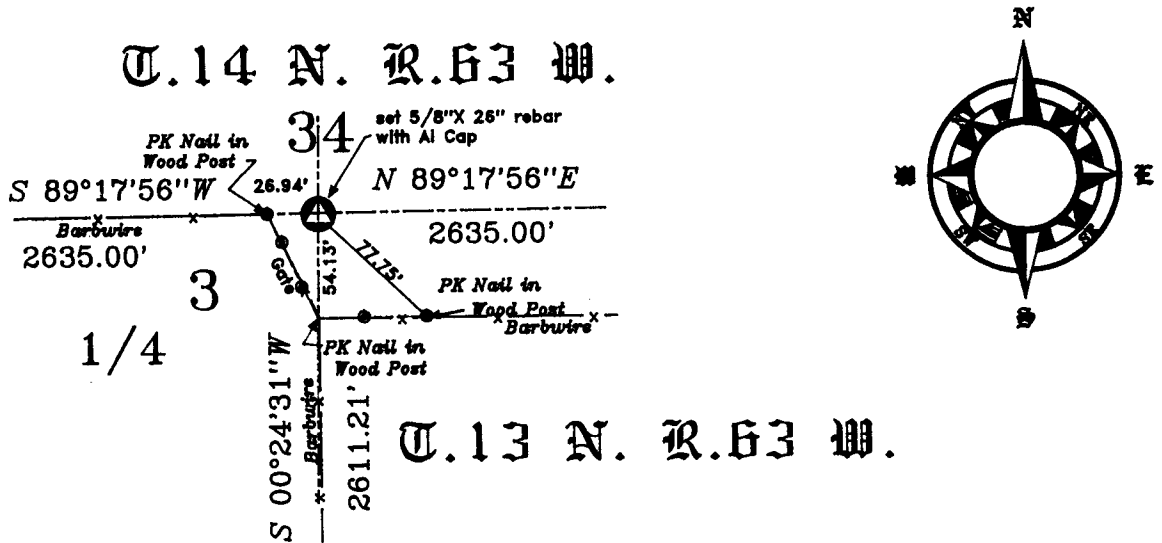
(In compliance with the *CORNER PERPETUATION AND FILING ACT*, Wyoming Statutes, 1997, Section 33-29-140, et seq., and the Rules and Regulations of the Board of Registration for Professional Engineers and Professional Land Surveyors)

Reverse side of this form may be used if more space is needed.

Record of original survey and citation of source of historical information (if corner is lost or obliterated). Description of corner monumentation evidence found and/or monument and accessories established to perpetuate the location of this corner. Sketch of relative location of monument, accessories, and reference points with course and distance to adjacent corner(s) (if determined in this survey). Method and rationale for reestablishment of lost or obliterated corner.

Township boundaries were surveyed by John B. Thomas on a contract dated 14 Oct. 1870, a stone was set for 1/4 corner common to Section 3 of T.13 N. R.63 W. and Section 34 of T.14 N. R.63 W. of the 6th P.M., said Stone was searched for but not found. This corner was set by the single proportion method as perscribed in the 1973 BLM manual.

Set 5/8"X 28" rebar with 3-1/4" Aluminum Cap 26.94 feet East of a 6 inch diameter Cedar fence post with a PK nail set therein, North 54.13 feet from a pk nail set in a Corner Post and 77.75 feet from a PK nail set in a Cedar fence post lying Easterly along the fence line from the previous reference tie, said Corner Monument lies approximately 400 feet Northeasterly from a Windmill. The Section Corner common to Sections 3,4,33 & 34 lies S89°17'58"W a distance of 2635.01 feet, the Section Corner common to Sections 2, 3, 34 & 35 lies N89°17'58"E a distance of 2635.00 feet, the Center 1/4 Corner of Section 3 lies S00°24'31"W a distance of 2611.21 feet.



Date of Field Work: _____

Office Reference: _____

CROSS INDEX DIAGRAM

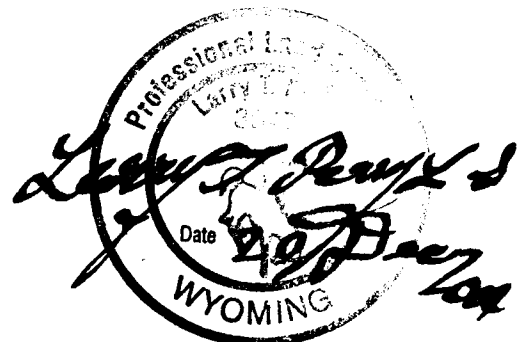
1	2	3	4	5	6	7	8	9	10	11	12	13	14	15	16	17	18	19	20	21	22	23	24	25			
A																									A		
B																									B		
C	6	5	4	3	2	1																			C		
D																										D	
E																										E	
F																										F	
G	7	8	9	10	11	12																				G	
H																										H	
J																										J	
K																										K	
L	18	17	16	15	14	13																				L	
M																										M	
N																										N	
O																										O	
P	19	20	21	22	23	24																				P	
Q																										Q	
R																										R	
S																										S	
T	30	29	28	27	26	25																				T	
U																										U	
V																										V	
W																										W	
X	31	32	33	34	35	36																				X	
Y																											Y
Z																											Z

Land Surveyor / Firm / Address

Terrestrial Surveying & Mapping Co
1127 Terry Ranch Road
Cheyenne, Wyoming 82007
Larry T. Perry L.S.

This corner record was prepared by me or under my direction and supervision.
SEAL & SIGNATURE

Telephone: 307 634 9360



Your Friendly Neighborhood Surveyor

Corner Name: 1/4 common to Sec 3 & 34 Section: 3 & 34 T. 13 & 14 N. R. 63 W.; 6th P.M. Cross-Index No.: A~15 & Z~15 SBRPEPLS/PLSW: March 1994; PLSW January 1998